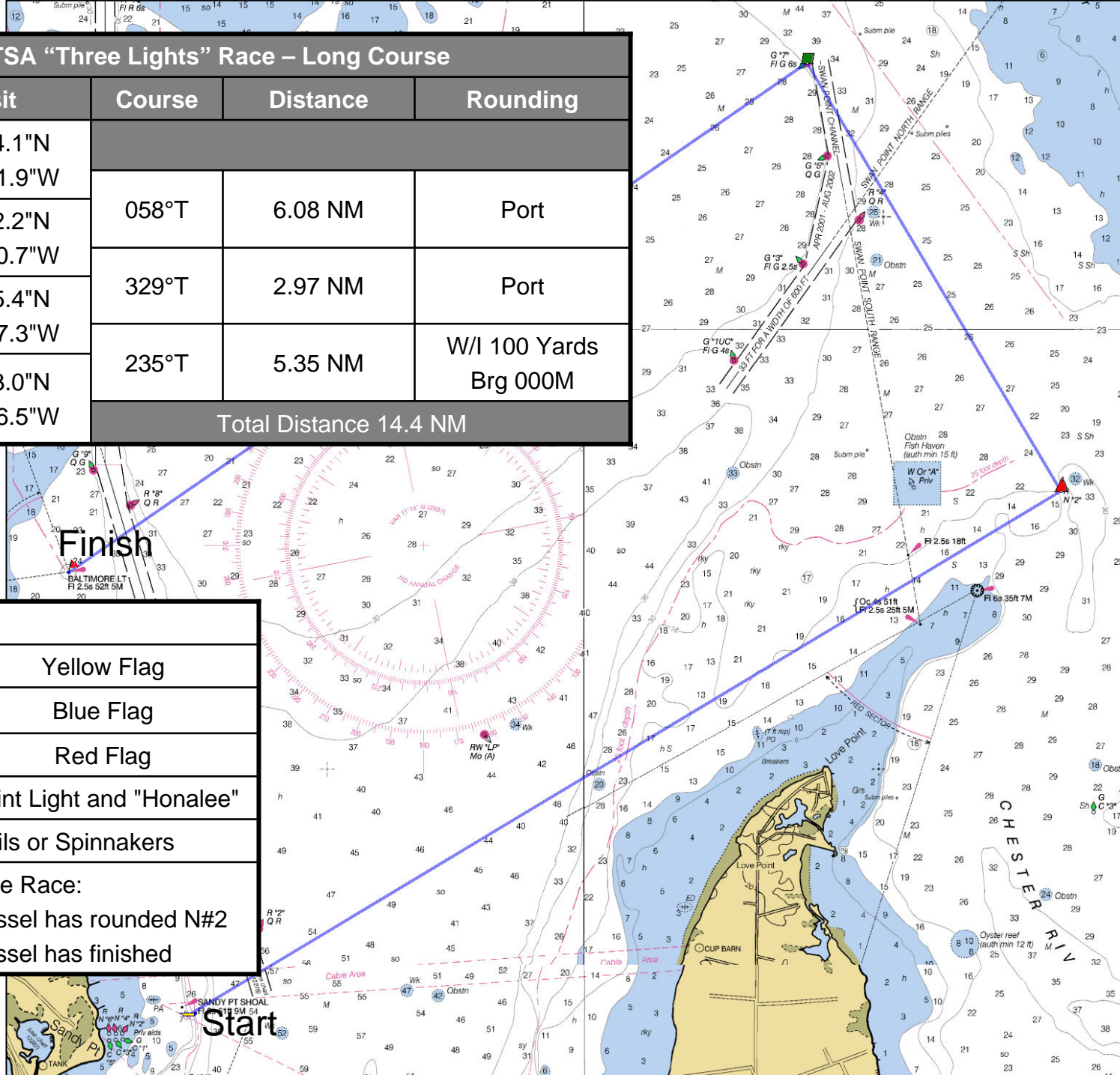
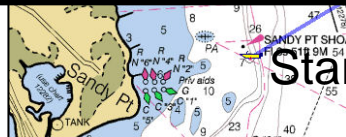


2007 CTSA "Three Lights" Race – Long Course

Waypoints	Posit	Course	Distance	Rounding
Start	39°0'54.1"N 76°23'01.9"W			
R N"2"	39°4'02.2"N 76°16'20.7"W	058°T	6.08 NM	Port
G"7"	39°6'35.4"N 76°18'17.3"W	329°T	2.97 NM	Port
Finish	39°3'33.0"N 76°23'56.5"W	235°T	5.35 NM	W/I 100 Yards Brg 000M
		Total Distance 14.4 NM		



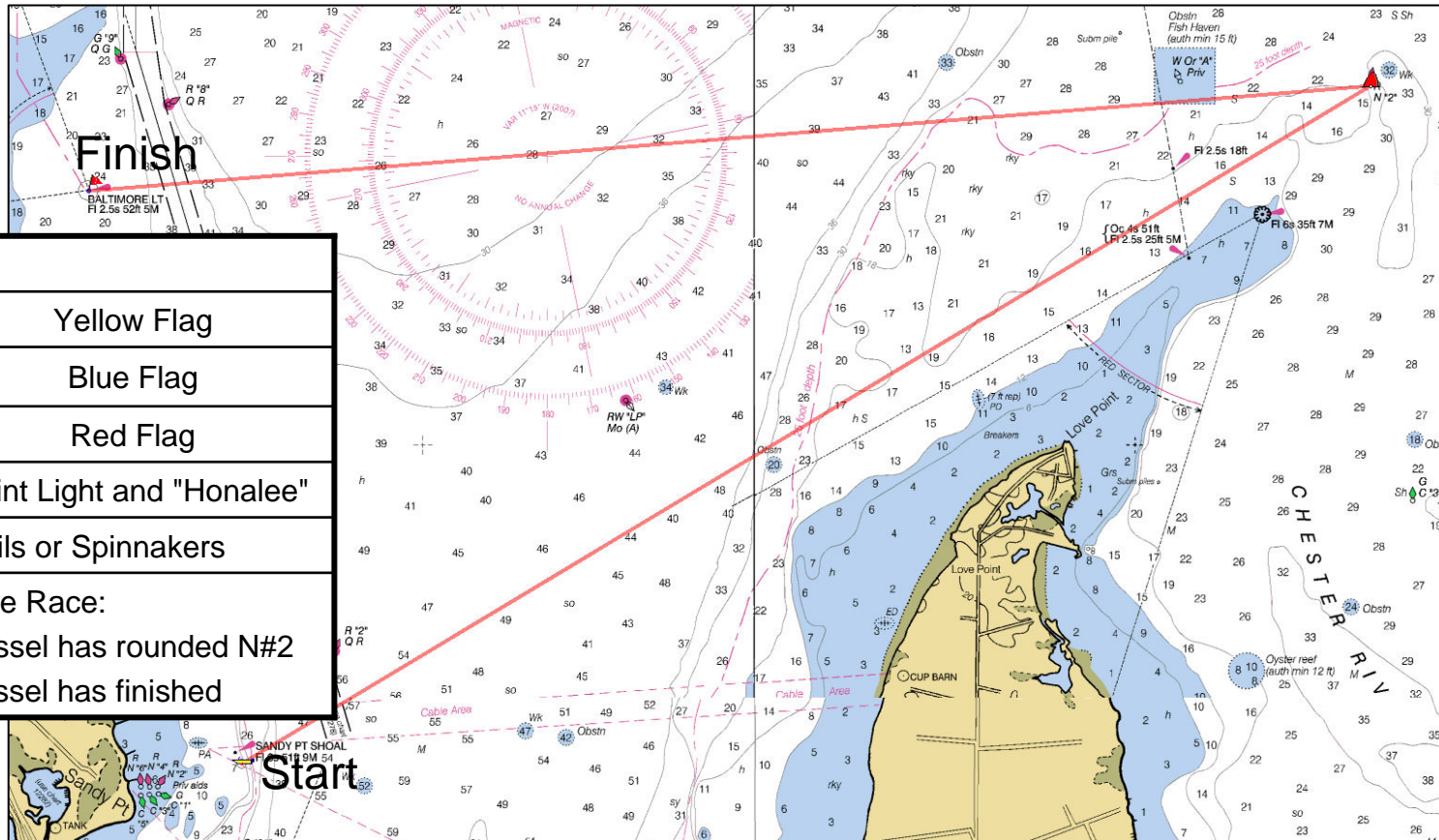
Time	Signal	
1200	Warning	Yellow Flag
1205	Prep	Blue Flag
1210	Start	Red Flag
Start between Sandy Point Light and "Honalee"		
NO Mizzen staysails or Spinnakers		
Time Limit to Abandon the Race:		
<ul style="list-style-type: none"> – 1500 - If no vessel has rounded N#2 – 1730 - If no vessel has finished 		



2007 CTSA "Three Lights" Race – Short Course

(To be taken if the lead boat does not round Nun #2 before 1400)

Waypoints	Posit	Course	Distance	Rounding
Start	39°0'54.1"N 76°23'01.9"W			
R N"2"	39°4'02.2"N 76°16'20.7"W	058°T	6.08 NM	Port
Finish	39°3'33.0"N 76°23'56.5"W	265°T	5.94 NM	W/I 100 Yards Brg 000M
Total Distance 12.02 NM				



Time	Signal	
1200	Warning	Yellow Flag
1205	Prep	Blue Flag
1210	Start	Red Flag
Start between Sandy Point Light and "Honalee"		
NO Mizzen staysails or Spinnakers		
Time Limit to Abandon the Race:		
<ul style="list-style-type: none"> – 1500 - If no vessel has rounded N#2 – 1730 - If no vessel has finished 		